



REFLECTION OF YOU IN  
EVERY DIMENSION

AN ISO 9001 : 2015 CERTIFIED COMPANY

[www.evabond.com](http://www.evabond.com)





## ABOUT US

Eva Alu Panel Ltd. with an impressive portfolio of manufacturing, marketing and exports is a name to vouch for in the field of aluminium panels.

The company employs a team of highly experienced and qualified engineers as also production experts and office staff. A golden trail of work because of years of consistent and efficient service has made Eva a brand synonymous to trust and faith.

Apart from the track record, it is flexibility and attention to details that has imparted Eva the edge and has helped it acquire a unique market position.

Over the span from its inception till today, Eva has strictly adhered to industry-prescribed norms. The planning, the system of work as well as the product manufacturing- everything is done in accordance with the ISO 9001:2015 guidelines. This has made getting product approvals easy and has opened the door for entry into the new market.

The able leadership of Hon'ble Chairman Shri N.A. Patel and the Hon'ble Managing Director Shri J.K. Patel has been a constant source of inspiration and motivation for team Eva.

The strength lies in the development and production of Quality Specialist industrial and commercial laminated of injected composite panels to suit individual requirements.

Eva Bond with high end German Technology was formed to service a specialist market. The strength lies in the development and production of customised and high-grade laminated composite panels.

At Eva, customer satisfaction is of utmost importance. The marketing team reaches out to customers and the wide-spread network of dealers and distributors across India fulfil their requirements.

Eva's list of clientele speaks volumes about the standing of the brand Eva in the market. With firm determination and commitment to quality, Eva is the rising Sun of the new age.



# STONE SERIES



**EB- 351** GRAPHITE



**EB- 352** ALASKA



**EB- 353** RED VELVET



**EB- 354** COPPER STONE

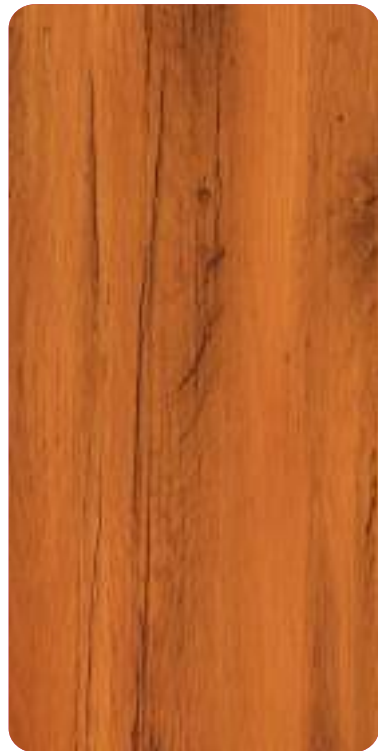


Choose your series as per project requirement  
Kindly confirm your application area (Interior or Exterior) products are of different grade





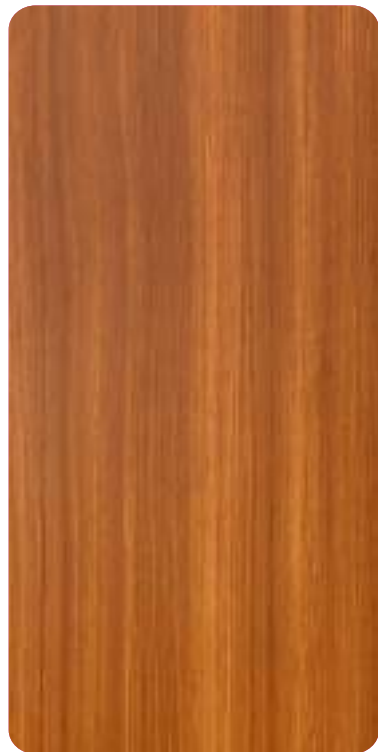
# TEXTURE WOOD SERIES



**EB- 309** TIGER WOOD



**EB- 310** KOP TEXTURE



**EB- 318** BURMA TEAK



**EB- 324** SCOTT WOOD



**EB- 325** BALINESE TEAK



**EB- 326** DAK PINE



**EB- 327** INDONESIAN TEAK



**EB- 328** NATURAL TEAK



Choose your series as per project requirement  
Kindly confirm your application area (Interior or Exterior) products are of different grade

PREMIUM SERIES ● GOLD SERIES ● CLASSIC SERIES ● ECCO SERIES ● PARTITION PANEL ●



# WOODEN SERIES



**EB- 312** AFRICAN PIE



**EB- 313** BOCOTE WOOD



**EB- 314** WENGE WOOD



**EB- 315** CHERRY WOOD



**EB- 316** BRAZILIAN WOOD



**EB- 317** WALNUT WOOD



**EB- 319** SAPELI WOOD



**EB- 320** OVANGKOL WOOD



Choose your series as per project requirement  
Kindly confirm your application area (Interior or Exterior) products are of different grade





Choose your series as per project requirement  
Kindly confirm your application area (Interior or Exterior) products are of different grade

# MARBLE SERIES



**EB- 306** EMPRADOR



**EB- 307** MARBLE BLACK



**EB- 321** PERLATO



**EB- 322**  
ITALIAN ROSE MARBLE



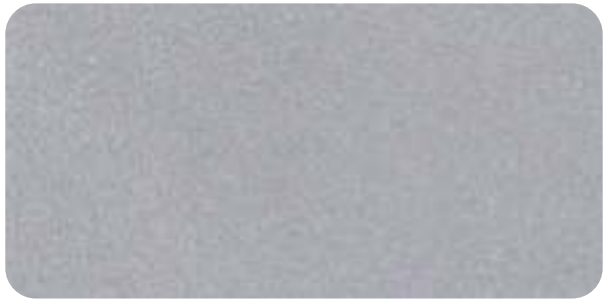
**EB- 323**  
ITALIAN BLACK MARBLE



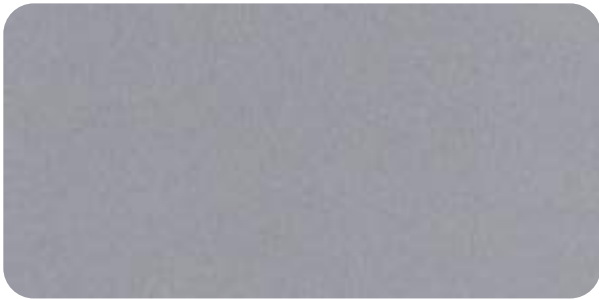




# METTALIC COLOURS



EB 101 | BRIGHT SILVER



EB 102 | METTALIC SILVER



EB 103 | CHAMPAGNE SILVER



EB 104 | CHAMPAGNE GOLD



EB 105 | DARK BRONZE



EB 106 | KARAT GOLD



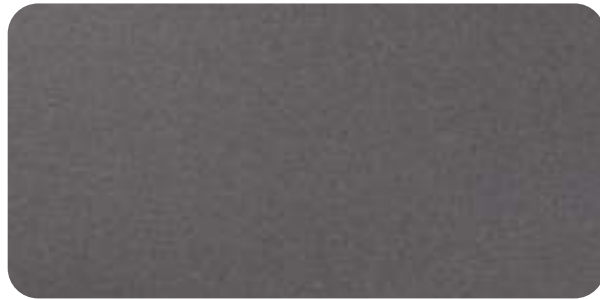
EB 107 | FINE COPPER



EB 108 | SILVER BLUE



EB 109 | JADE GREEN



EB 110 | SILVER BLACK



EB 111 | PEARL COPPER



EB 112 | COFFEE BROWN



EB 113 | WINE RED



EB 115 | METTALIC COPPER



Choose your series as per project requirement  
Kindly confirm your application area (Interior or Exterior) products are of different grade

PREMIUM SERIES GOLD SERIES CLASSIC SERIES ECCO SERIES PARTITION PANEL



# color

beyond  
sight





# SOLID COLOURS



EB 201 | SNOW WHITE



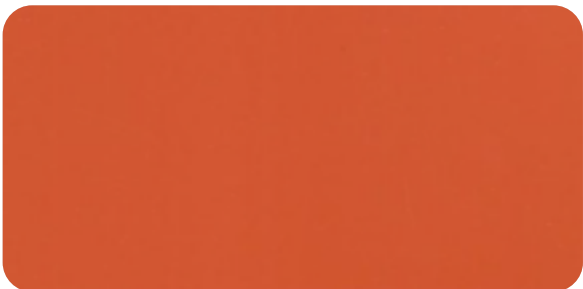
EB 202 | MILKY WHITE



EB 203 | LEMON YELLOW



EB 204 | TRAFFIC YELLOW



EB 205 | REFRESHING ORANGE



EB 206 | BRIGHT RED



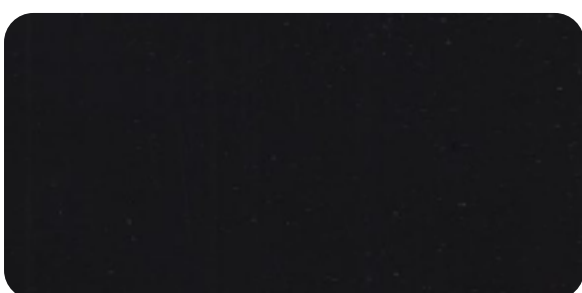
EB 207 | REFRESHING GREEN



EB 208 | SEA BLUE



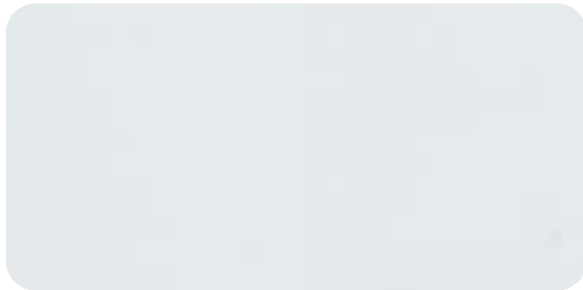
EB 209 | OPPO GREEN



EB 210 | BLACK



EB 211 | DARK BLUE



EB 212 | GLOSSY WHITE



EB 213 | GLOSSY RED



EB 214 | DARK PINK



EB 215 | ASH GREY



EB 216 | BURGANDY



EB 217 | GLOSSY BLACK



Choose your series as per project requirement  
Kindly confirm your application area (Interior or Exterior) products are of different grade

PREMIUM SERIES ● GOLD SERIES ● CLASSIC SERIES ● ECCO SERIES ● PARTITION PANEL ●



# HPL EVABOND HPL ACP

## PREMIUM WOODEN EXTERIOR CLADDING

Better Than Wood, Lasts Longer



Traditionally wooden materials have been used extensively as a construction material, both for exterior beauty and interior decor. However, in spite of its many advantages, usages of wooden materials have some serious shortcomings. Firstly, being a natural material, cutting of trees for wood impacts our environment and impacts climate change also. hence usage of wood is not eco friendly. Secondly, being a natural material, it has a very limited life and requires extensive maintenance. Recognizing these challenges, the EVABOND has introduced HPL Series, a High Pressure Laminated (HPL) Aluminium Composite Panel. HPL Series is more durable and elegant in looks as compared to wooden materials and is also highly weather resistant. It can be easily used for any exterior cladding application or for interior decoration purpose.



ECO FRIENDLY



TERMITE RESISTANCE



EXTRA STRENGTH



WEATHER RESISTANCE

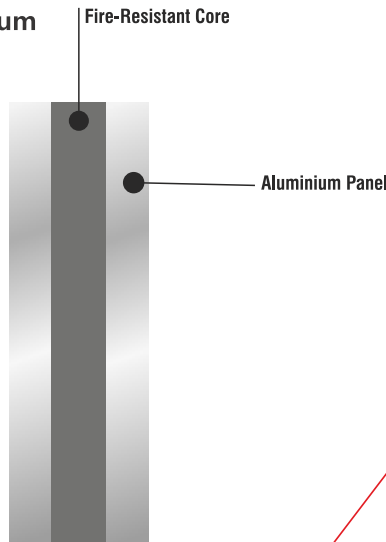


USE OF LEAD FREE PAINTS

Fire Retardant is a substance that is used to slow or stop the spread of fire or reduce its intensity. This is commonly accomplished by chemical reactions that reduce the flammability of fuels or delay their combustion. Fire retardants may also cool the fuel through physical action or endothermic chemical reaction. Fire Retardant material core is made with Magnesium Hydroxide Aluminium Tri Hydroxide.



## FIRE RESISTANT GRADE



Choose your series as per project requirement  
Kindly confirm your application area (Interior or Exterior) products are of different grade

## GALAXY SERIES



EB 901 | SPARKLING WHITE



EB 902 | SPARKLING BLACK



EB 903 | SPARKLING RED



EB 904 | SPARKLING BLUE



EB 905 | SPARKLING BRONZE



PREMIUM SERIES ● GOLD SERIES ● CLASSIC SERIES ● ECCO SERIES ● PARTITION PANEL ●



# BRUSH & MIRROR SERIES



EB 301 | BRUSH SILVER



EB 302 | BRUSH GOLD



EB 303 | MIRROR SILVER



EB 304 | MIRROR GOLD

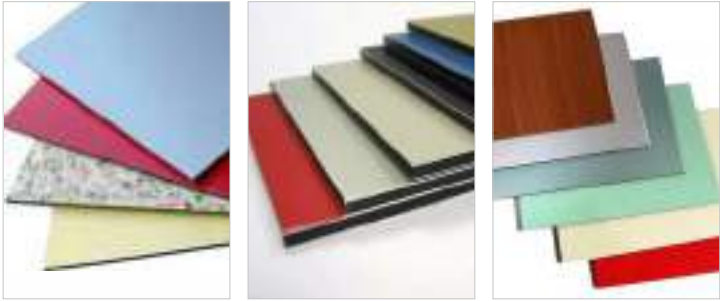
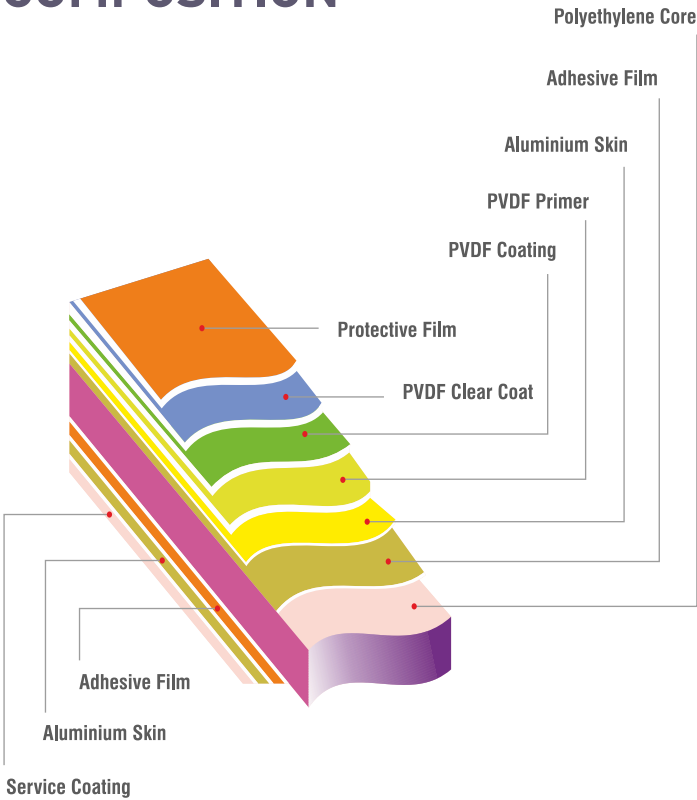


Choose your series as per project requirement  
Kindly confirm your application area (Interior or Exterior) products are of different grade

Eva Bond resin based finishes meet or exceed the performance requirement of ASCA 96(Architectural Spray Coaters Association) and AAMA 2605 (American Architectural Manufacturers Association) for high performance organic coating on architectural panels.

Eva Bond panels are well known for having a versatile choices of aluminium skin surfaces. Polyester coated aluminium surface provides the enormous choices of colour for interior decoration. Custom Colours matching is also available upon request PVDF coated surface provides excellent properties of durability including chemical resistance, chalking resistance, gloss and colour retention.

## EVA BOND PANEL COMPOSITION



## TECHNICAL SPECIFICATION

SERIES CODE	
PREMIUM	●
GOLD	●
CLASSIC	●
ECCO	●
PARTITION PANEL	●

### PRODUCT TOLERANCE

STANDERD WIDTH	1220mm
AVAILABLE WIDTH	1550mm
STANDERD LENGTH	2440mm,3050mm,3660mm
AVAILABLE LENGTH	Any length up to 4880mm
STANDARD THICKNESS	3mm,4mm
AVAILABLE THICKNESS	2mm,5mm,6mm
ALU.COIL THICKNESS	0.25mm,0.50mm
WIDTH	0 / ± 4.0 mm
LENGTH	0 / ± 6.0 mm
THICKNESS	4 mm thick ± 0.2 mm
BOW	0.5% of length & Width
SQUARENESS	Max 5.0 mm



## APPLICATIONS

EvaBond is the most versatile product for exterior and interior use. • Exterior (curtain walling and wall panelling) of high rise apartments, industrial and commercial buildings, hospitals, hotels, gas stations, shopping malls, educational institutes, convention centers etc. • Roof edging and spandrel panels, wall and ceiling panels, beam wraps etc. • Face elift / retrofit offer buildings columns and beam covers. Interiors (wall and Ceilings) of shops apartments, offices, workshops, showrooms, elevators etc. • Store canopies, shop fronts, sign-boards, display units, vehicle bodies, sign-posts etc. • Innovative furniture, partitions etc.

## SUGGESTIONS

To ensure colour consistency, the total requirement for a project is advised to be placed in one order. It is also recommended to install the panels in the same direction as marked arrow on protective peel-of-film to avoid possible reflection differences. • Customer colours are also available upon request for solid colours, metallic colours and special finishes etc. Subject to the respective minimum quantity. Colour may vary from batch to batch ( $\pm 5$ )

## ADVANTAGE OF EVABOND

- Ultra modern look and excellent flatness can be shaped and formed without any loss of surface integrity.
- Light weight, Reducing frame loading and installation costs.
- Good Sound insulation - reduces unwanted vibrational noise.
- Ease of insulation and fabrication - can be bent, cut, drilled, punched, stamped and shaped into complex shapes.
- Resistance of extremes of weather exposure and temperature.
- Excellent UV characteristics retains colour after long exposure.
- Smooth paint finish and lacquering - 3 layer PVDF 70% Kynar -500.
- Superior flatness - ideal of creating smooth, monolithic surface.
- High impact resistance. • Pollution, acid, alkali and self-sprey resistance finish Very low coefficient of expansion.
- Minimum maintenance.
- Wide range of choice available.
- Can be cleaned using detergents.
- Anti-Fungal protection.

## SATISFIED CUSTOMERS







[www.evabond.com](http://www.evabond.com)

## EVA ALU PANEL LIMITED

At. & Post-Dalpur (Himatnagar), N.H. 8, Nr. Ashirwad Hotel, Ta. Prantij, Dist. Sabarkantha, Gujarat, India - 383 120

Mo.: 94280 02237, 95376 21621 | Email: [info@evabond.com](mailto:info@evabond.com) | [marketing@evabond.com](mailto:marketing@evabond.com)

